

OneAtlas Add-in for ArcGIS Pro Tutorial

Searching, Ordering and Retrieving Airbus Optical Imagery

1. Overview

The OneAtlas Add-in brings Airbus Optical imagery straight into ArcGIS Pro. From a single ribbon tab you can draw or import an area of interest, search the Airbus catalog, preview and order imagery, track your orders, and retrieve your delivered products — without leaving ArcGIS Pro.

The Add-in supports two kinds of OneAtlas contracts:

- **Living Library** — A subscription with a prepaid credit balance used to stream or download imagery on demand.
- **Pay-Per-Order (PPO)** — An à-la-carte contract where each order is quoted and invoiced individually, covering the full Pléiades Neo, Pléiades and SPOT archive.

Note: Most screens look and work the same for both contract types. Where they differ, this guide calls it out explicitly.

2. Installing the Add-in

1. Double-click the downloaded '.esriaddin' file, or open ArcGIS Pro and go to Project → Add-In Manager to install it manually.
2. Confirm the installation when prompted.
3. Restart / open ArcGIS Pro. A new Airbus OneAtlas tab appears in the ribbon.

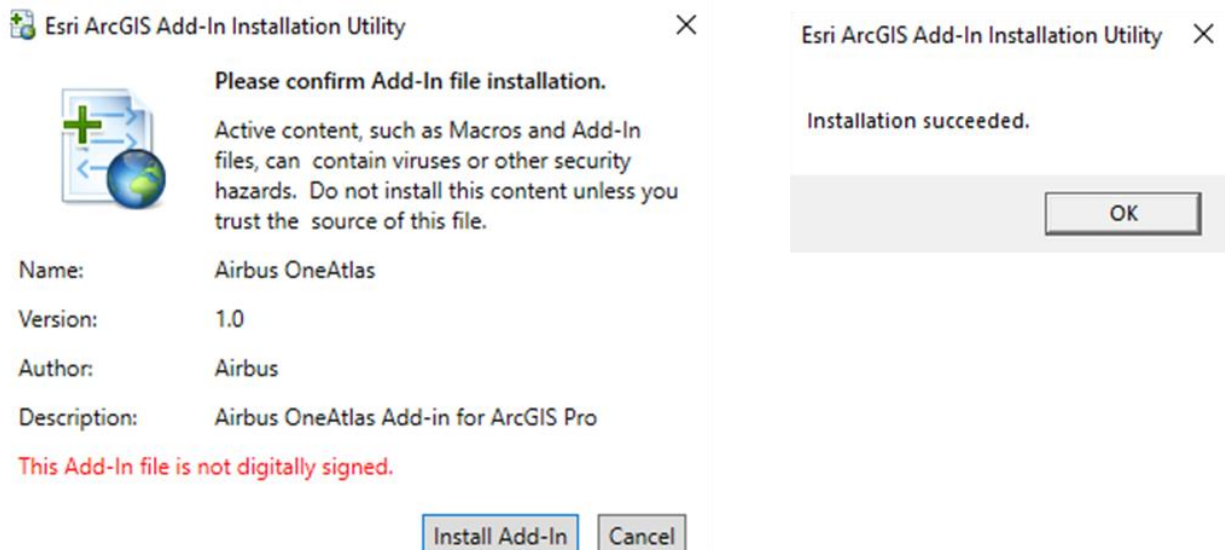


Figure 1 — Confirm the Add-In installation, then wait for the success message.

3. Signing In and Selecting Your Contract

4. Open the Airbus OneAtlas tab and click Log In.
5. Authenticate with either your OneAtlas credentials or an API Key (handy for reusing a session without logging in again each time).
6. Select your active contract from the Select a Contract dropdown, top-left of the ribbon.

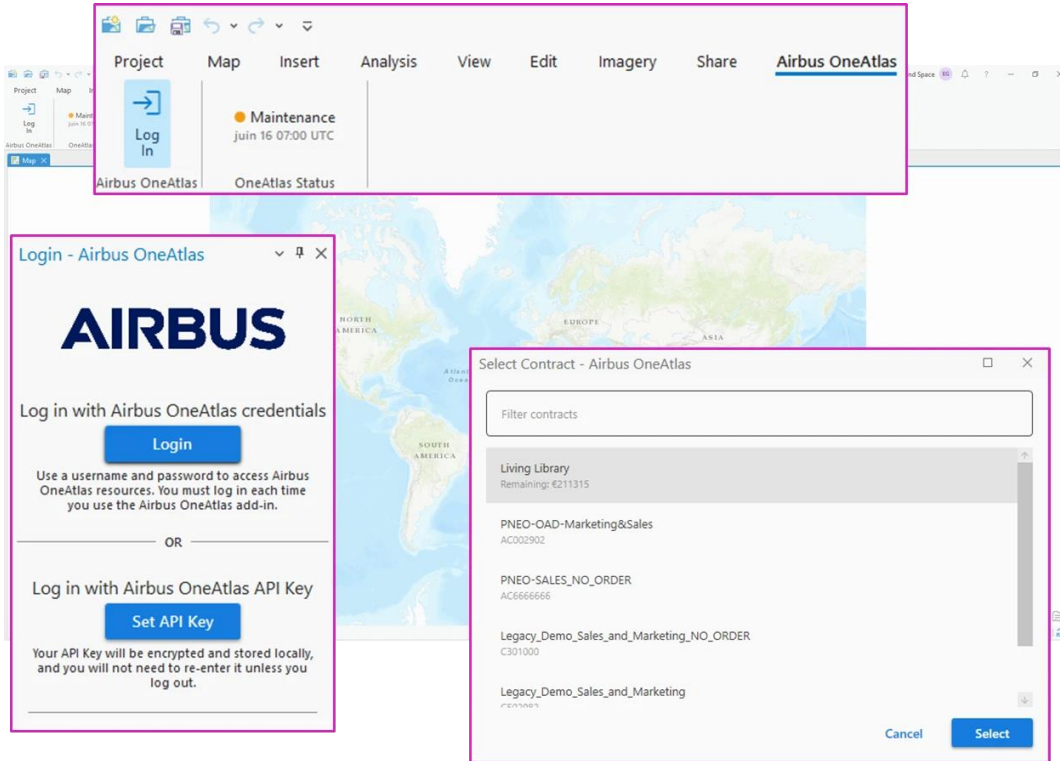


Figure 2 — Log In button, credentials/API Key panel, and the contract selector (Living Library, PPO contracts).

Once a contract is active, the ribbon shows its name and, for Living Library, your remaining credit balance (e.g. “Living Library — Remaining: €211,315”). For a PPO contract, the ribbon instead shows the contract reference.

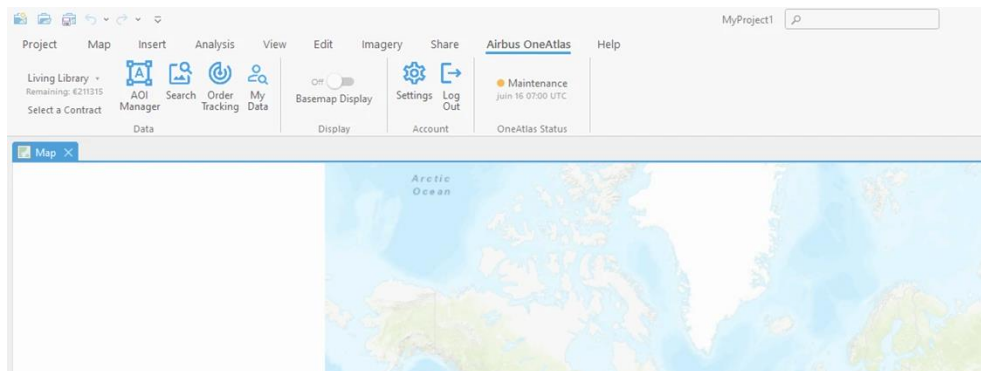


Figure 3 — The Airbus OneAtlas ribbon once logged in, with the AOI Manager, Search, Order Tracking and MyData buttons.

4. Step 1 — Define Your Area of Interest

Click AOI Manager to open the AOI pane. This is where you define the area over which you want to search for imagery.

- **Draw AOI** — draw a polygon directly on the map.
- **Import** — bring in an existing boundary from Shapefile, GeoJSON, KML, KMZ or CSV.

Every AOI you create appears in the list with its surface area in km². Use the checkboxes to decide which AOIs are active for Search and MyData, the magnifier to zoom to one, and the red cross to delete it. Click a name to rename it.

Use Export to save your AOIs back out as GeoJSON, KML, Shapefile or CSV.

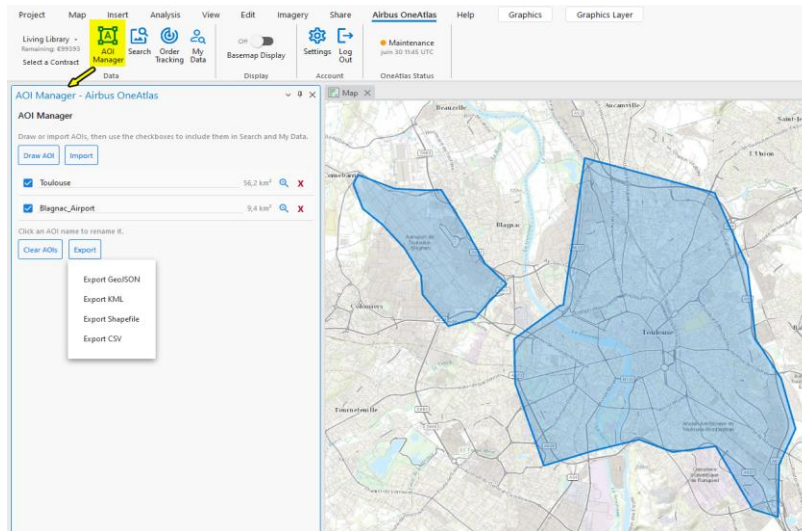
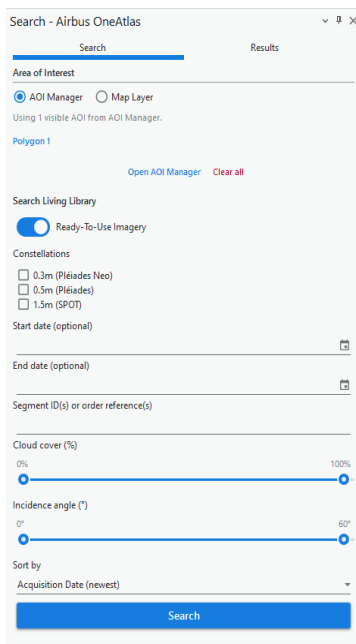


Figure 4 — AOI Manager with two active areas (Toulouse, Blagnac_Airport) and the Export menu open.

5. Step 2 — Search the Archive



Click Search to open the Search pane. On the Search tab you choose your area (from the AOI Manager or from a map layer) and set your filters, then move to the Results tab to browse matching scenes.

Figure 5 — Search tab: area of interest, constellations, and date range.

5.1 Ready-To-Use Imagery toggle (Living Library Only)

This toggle controls which part of the Airbus catalog you are searching:

- **ON** — Searches the premium cache of recent, low cloud cover, low incidence angle scenes (imagery under ~18 months old). These are individual SENSOR products that stream instantly in ArcGIS Pro.
- **OFF** — Opens the full historical archive, consisting of ALBUM products that are not directly streamable. You get access to many more results, but ordered imagery needs to go through production and may take up to 48 hours to appear in My Data.
-

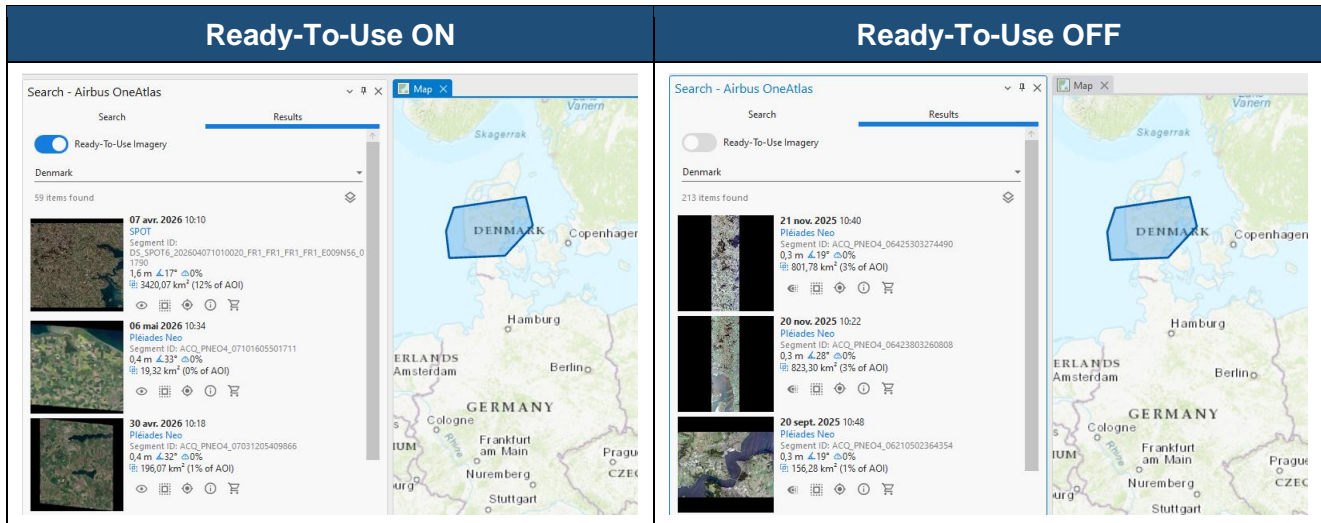


Figure 6 — Same AOI, same day: 59 streamable results with the toggle on vs. 213 results (including older/cloudier scenes) with it off. Living Library Only

5.2 Refining your search

Use the filters to narrow down results:

- **Constellation** — Pléiades Neo (0.3 m), Pléiades (0.5 m), SPOT (1.5 m).
- **Acquisition date** — restrict to a start/end date.
- **Cloud cover** — keep only clear scenes (0–100%).
- **Incidence angle** — filter out very oblique acquisitions (0°–60°).
- **Segment ID(s) or order reference(s)** — look up a specific scene or a past order.

On a PPO / archive contract, the same search also lets you filter by product type: Mono, Stereo, Tri-Stereo, or HD15-ready.

6. Step 3 — Explore Results on the Map

Each result in the list is a scene card with quick-action icons:

- **Preview** — stream the image (Ready-To-Use , Living Library) or display a low-resolution quicklook preview (full archive).
- **Footprint** — draw the scene's exact boundary on the map.
- **Zoom** — zoom the map to that scene.
- **Info** — view acquisition metadata (date, resolution, incidence angle, cloud cover, coverage of your AOI).
- **Cart** — add the scene to your basket to order it (or to your Wish List, on PPO, to batch several scenes into one order).

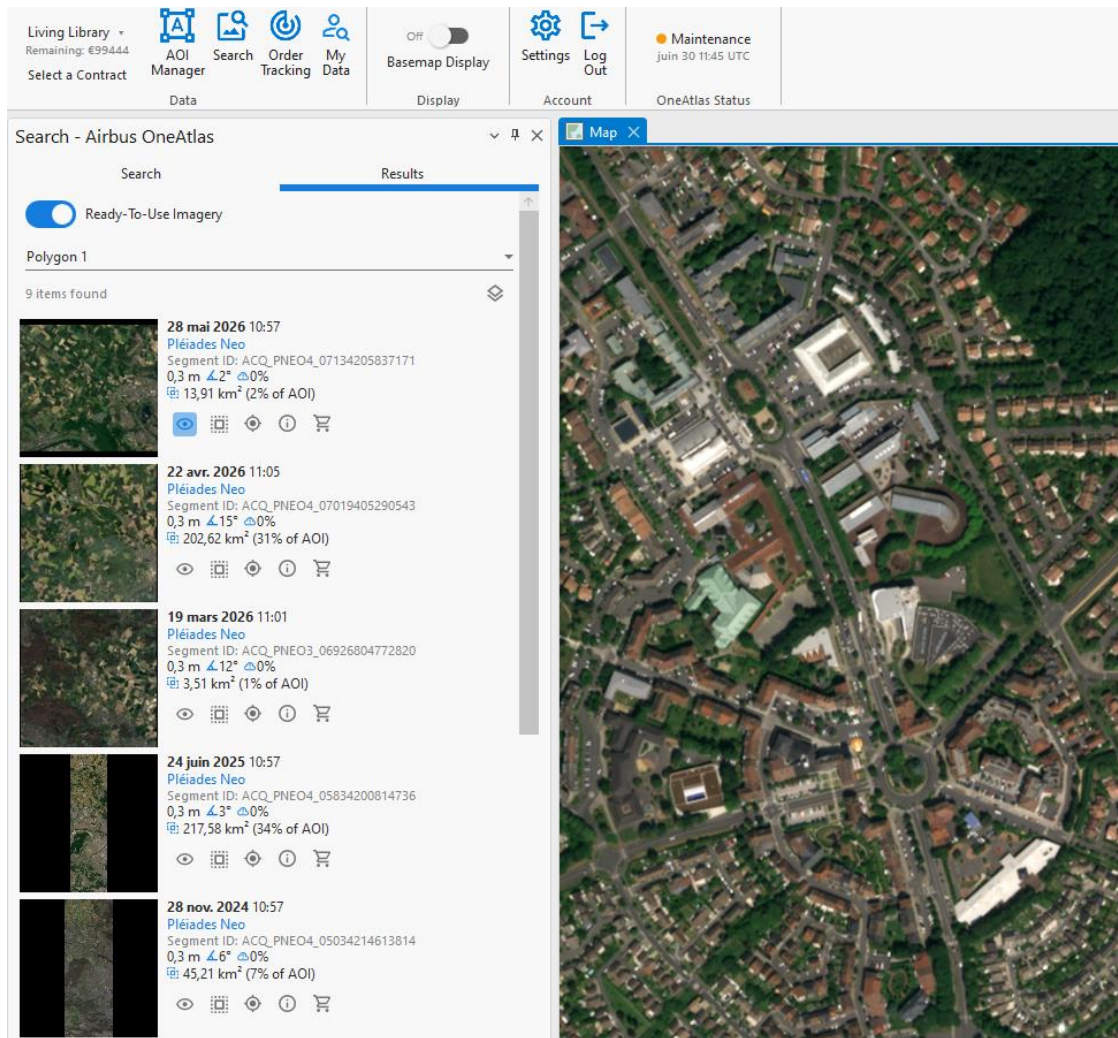


Figure 7 — A Pléiades Neo scene streamed at full resolution directly on the ArcGIS Pro map.

Note: You can toggle the OneAtlas Basemap Display on/off at any time to switch between the ESRI Map and the Airbus OneAtlas Basemap.

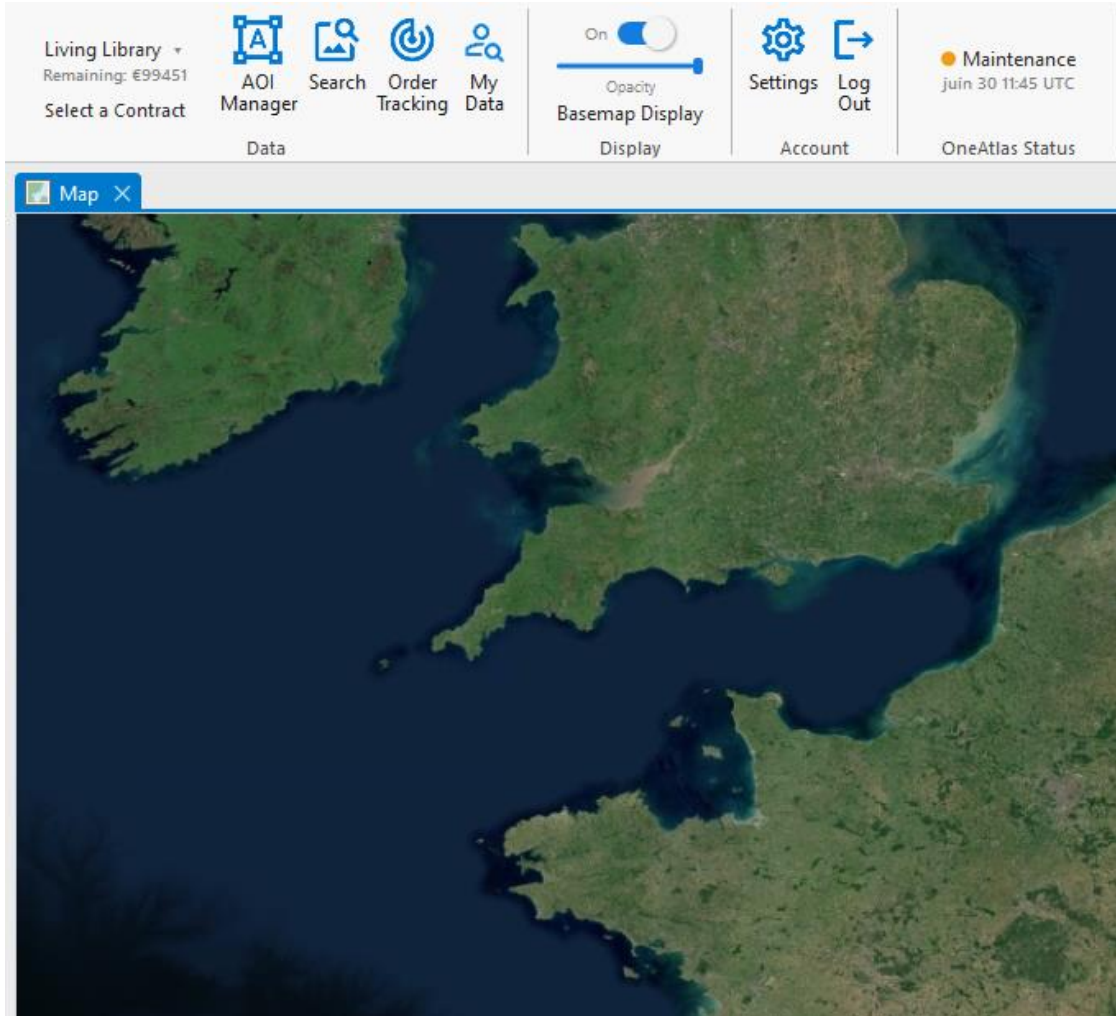


Figure 8 — OneAtlas Basemap Display switched on.

7. Step 4 — Order Your Imagery

Click the cart icon on a result (or open your 'Wishlist' to order several scenes at once, on PPO contracts) to launch the order wizard.

Step 1 — Production

- **Dehazing** — removes fog, smoke and haze from the raster.
- **HD15** — super-resolution processing that renders Pléiades Neo imagery at 15 cm. Selecting HD15 automatically enables Dehazing.
- **Sensor configuration** — Cropped to the AOI or Full Strip
- **Radiometric & geometric options** — band combination, processing level (e.g. Primary/Ortho), pixel coding, and image format (DIMAP/NITF/COG , JPEG2000/TIFF ...).

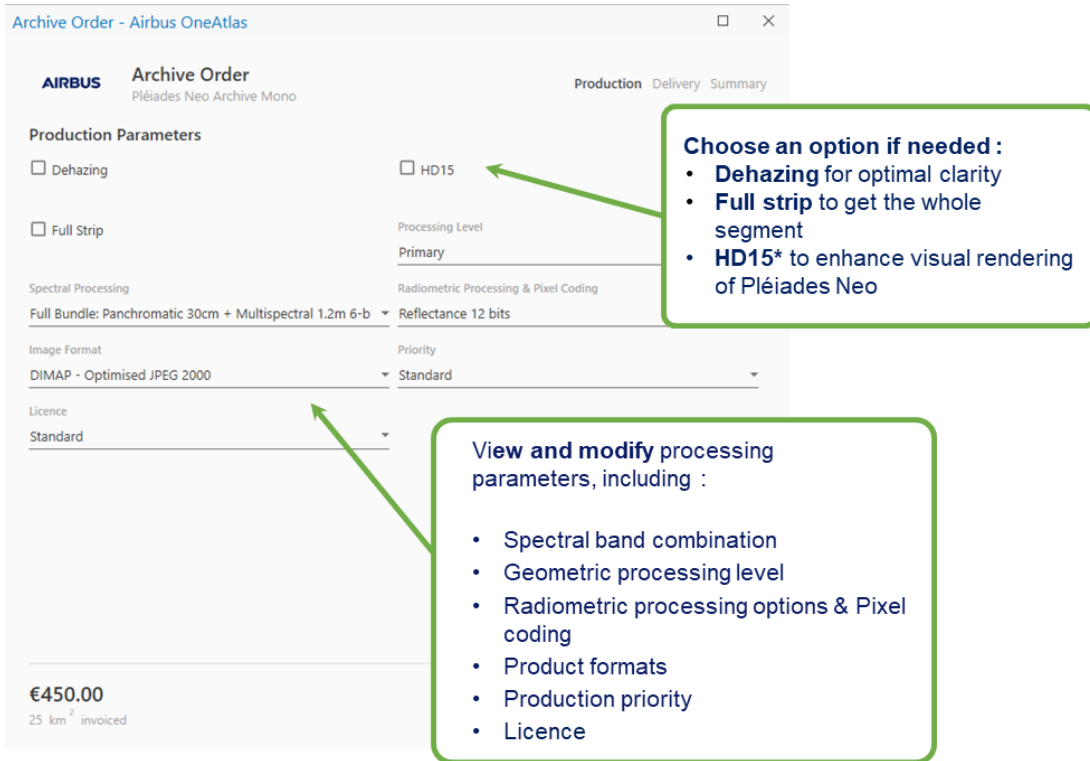


Figure 9 — Order wizard, Step 1 Production: choose optional processing and view/adjust the technical parameters.

Step 2 — Delivery

Name your project, choose the application field, and fill in end-user details (name, country) for compliance and tracking. You can add several email addresses to keep other stakeholders informed.

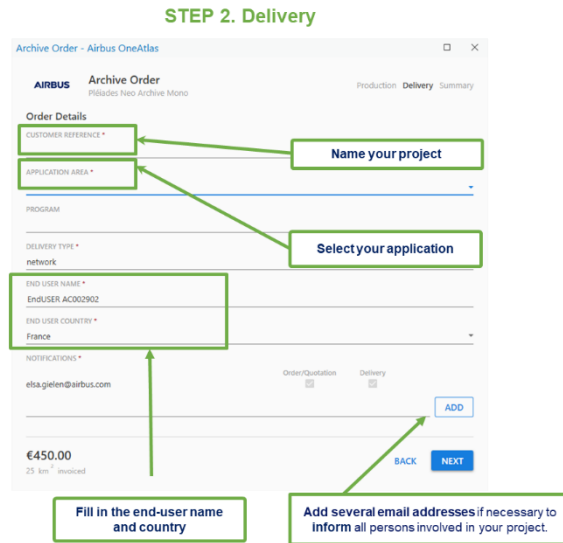


Figure 10 — Order wizard, Step 2 Delivery: project name, application, end-user information and notification emails.

Step 3 — Summary

Review the cost summary — request a quotation first if you need approval — then place the order. On a PPO contract, you can track pending quotations from Manage Quotes.

Archive Order - Airbus OneAtlas

AIRBUS Archive Order
Pléiades Neo Archive Mono

Production Delivery Summary

Summary

Product Type: Pléiades Neo Archive Mono
Customer Reference: Test_Add-In_Tutorial
Program:
Application Area: Unspecified
Delivery: network
End User: EndUSER AC0012263 (France)
Notifications: amine.elamrani@airbus.com
Price: €14,418.00 (801 km²)

Dehazing: false
HD15: False
Full Strip: false
Processing Level: Primary
Spectral Processing: Full Bundle: Panchromatic 30cm + Multispectral 1.2m 6-band
Radiometric Processing & Pixel Coding: Reflectance 12 bits
Image Format: DIMAP - Optimised JPEG 2000
Priority: Standard
Licence: Standard

I have read and accept the product license (Standard)
 I have read and accept the general terms and conditions

€14,418.00
801 km² invoiced

BACK GENERATE QUOTE PLACE ORDER

Figure 11 — Order wizard, Step 3 Summary : Request a quotation or Place the order

8. Step 5 — Track Your Orders

Open Order Tracking to follow every order from submission to delivery. Filter by All, In Progress, Completed or Error, or search by name/ID.

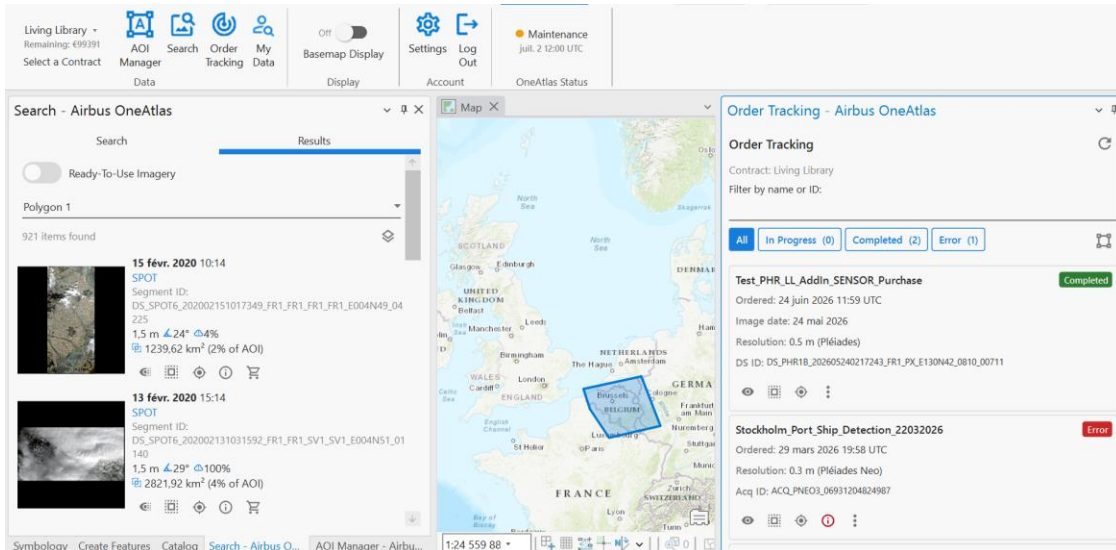


Figure 12 — Order Tracking list, Living Library contract.

Click an order to see its details: archive type, resolution, project reference, delivery status, and area invoiced. From there, 'Open in MyData' takes you straight to the delivered product.

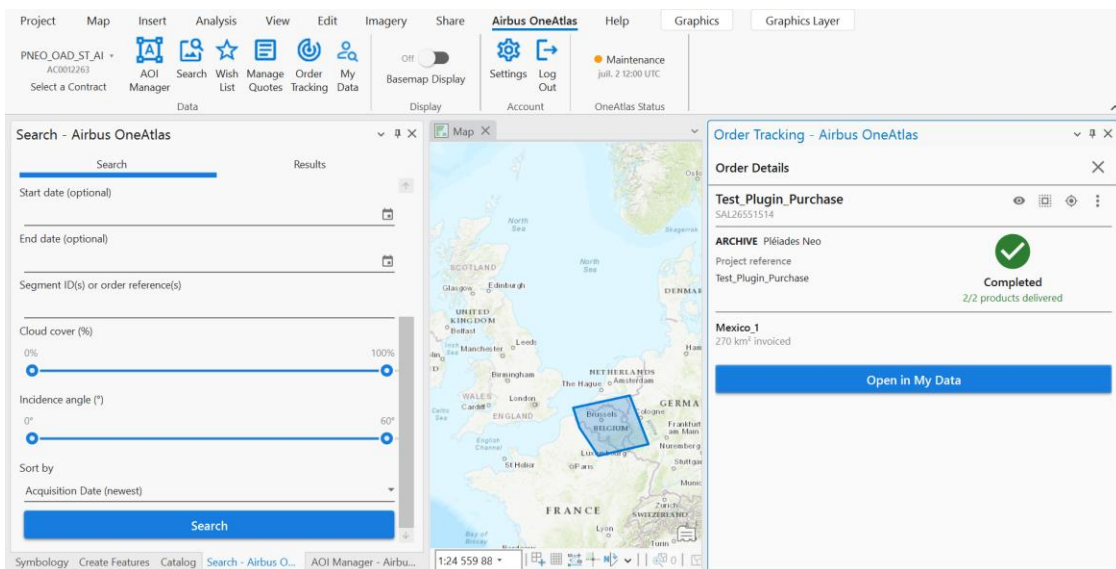


Figure 13 — Order detail panel, PPO / Pléiades Neo contract — order completed, 2/2 products delivered.

9. Step 6 — Access Your Data (MyData Workspace)

'MyData' is your private workspace where every delivered order is stored. Use the Filter tab to narrow results by resolution, publication date, area of interest, or ID.

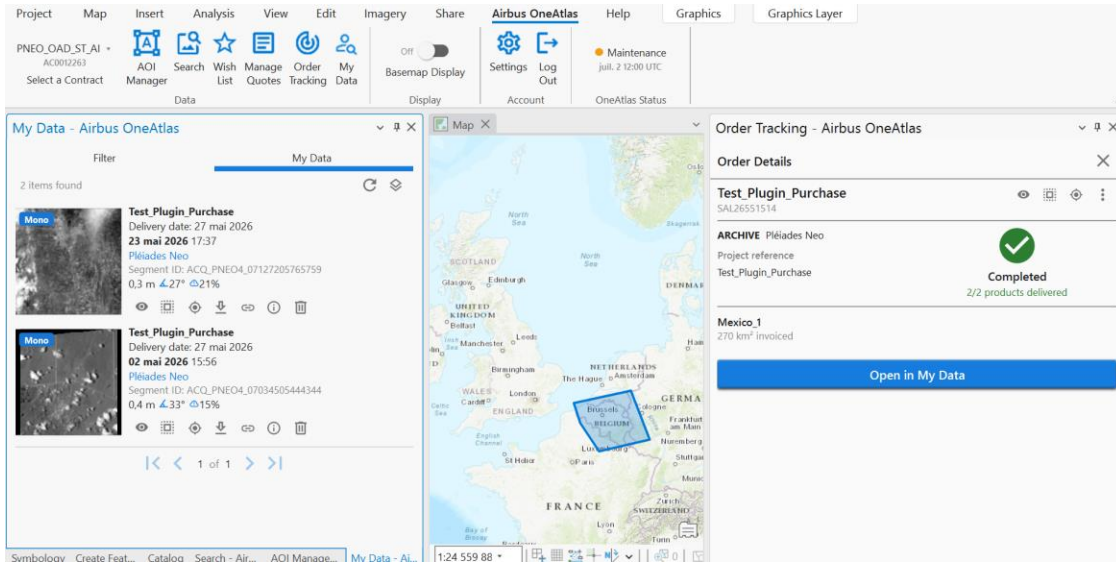


Figure 14 — 'MyData' workspace reached via "Open in My Data", showing delivered scenes.

For each delivered product you can:

- **View** — preview, show its footprint, or zoom to it on the map.
- **Download** — save the orthorectified product to your local GIS folders.
- **Streaming link** — get a WMS/WMTS URL to stream the asset in other web maps or GIS projects.
- **Info** — open metadata (Sales Order, Customer Reference, radiometric, geometric parameters).
- **Delete** — remove a delivered product from your workspace.

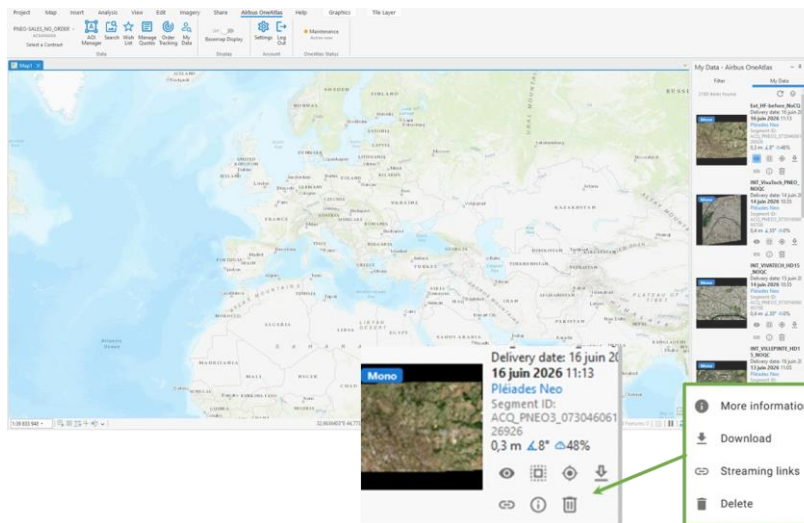


Figure 15 — Each item in MyData gives you these actions: Stream, Footprint, Zoom in, More information, Download, Streaming links, Delete.

10. Need Help?

For questions on the Add-in, your account, or an order, contact our developer support desk: intelligence-customertechnicalsupport@fr.airbus.com

For programmatic access beyond ArcGIS Pro, see the Airbus OneAtlas API documentation ([Living Library](#) and [PPO/Archive references](#)).